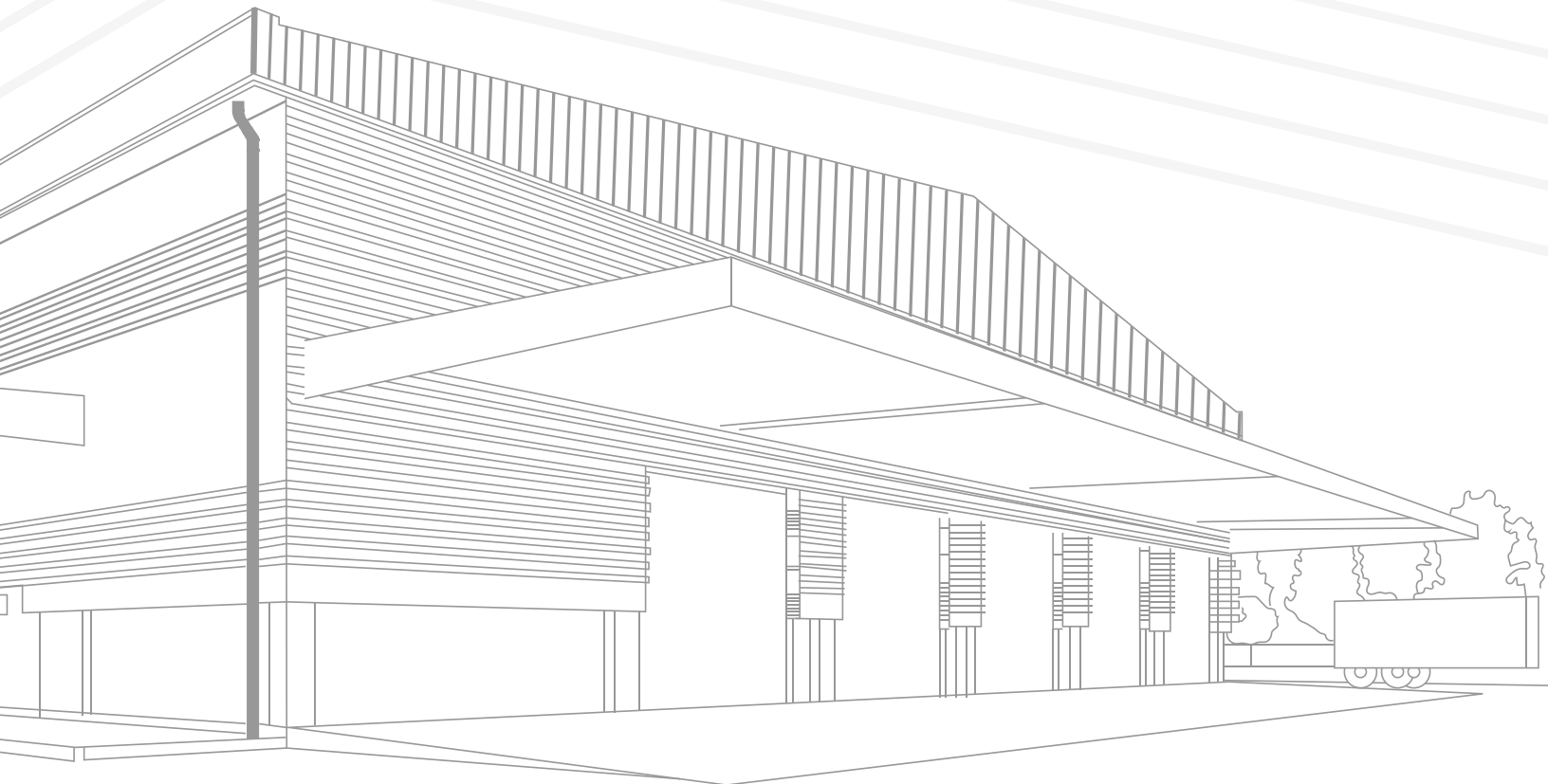


BUILDING SUCCESS TOGETHER

CRAFTING PRE-ENGINEERED STRUCTURES FOR YOUR BUSINESS TRIUMPH



Deepjyot Group

Team Deepjyot works closely with clients to understand their unique requirements of Steel Structures and deliver customized solutions that meet their specific needs and achieve utmost client satisfaction. The team of experts at Deepjyot includes skilled designers, structural engineers and technicians who are dedicated to ensuring that each project is completed to highest standards of quality using their years of experience.

The **Deepjyot Group** is A Conglomerate of three Companies, dealing in **Pre-Engineered Steel Buildings, Electrical Panels and Solar Panels**



Deepjyot Engineers
Pvt. Ltd.



Ascent Engineers
Pvt. Ltd.



Credence Solar Panels
Pvt. Ltd.

Figures to help you Fine Tune your Decision

Manufacturing Facility
10,000 Sq. Mtr. Area

Manufacturing Capacity
2,000 Ton Per Month

Projects Executed
600+ Nos.

Total Sq. Mtr. Built
19,51,000 Sq. Mtr

Infrastructure To Create Your Dream Project

Our manufacturing facility is equipped with the latest technology and **Machinery**, which enable the company to manufacture high-quality steel structures, including **Pre-Engineered Steel Buildings (PEB)**, **Heavy Fabrication**, and other **Custom Steel Structures**.

To ensure top-notch quality, Deepjot Engineers incorporates various elements into their manufacturing process. This includes an in-house design department responsible for design and engineering, the utilization of automated cutting and welding techniques, and the implementation of precision manufacturing methods. These meticulous practices guarantee that their steel structures possess exceptional quality, precise dimensions, and perfect fitting.



SHEARING MACHINE (LARGE)



PLASMA CUTTING MACHINE



FLANGE STRAIGHTENING MACHINE



SUBMERGED ARC WELDING MACHINE



DRILLING MACHINE



PUNCHING MACHINE



SHOT BLASTING MACHINE



AIRLESS SPRAY PAINTING MACHINE



C & Z PURLIN MACHINE



ROOF & SIDE SHEETING MACHINE



CRIMPING MACHINE

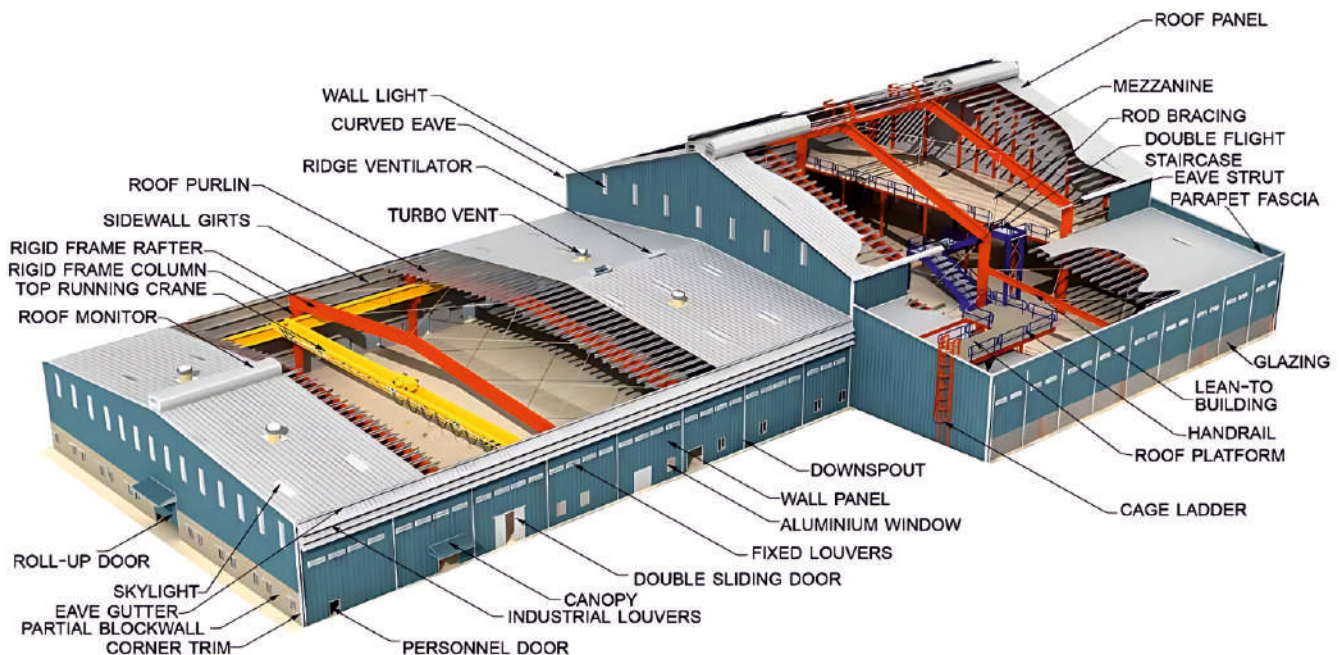


BENDING MACHINE

Pre-Engineered Building (PEB)

At Deepjyot Engineers Pvt. Ltd., our pre-engineered building (PEB) solutions redefine construction efficiency. PEBs offer rapid construction, cost-effectiveness, and structural resilience. Versatility is their hallmark, adapting to diverse requirements and locations. Choosing PEB ensures swift, durable, and intelligent construction.

Our team at Deepjyot Engineers focuses on designing PEBs with a keen eye on structural integrity, functionality, material selection, energy efficiency, compliance with codes, and sustainability. With a strong commitment to functionality and adaptability, PEBs can be tailored to meet your unique needs, whether it's a spacious warehouse, an efficient manufacturing facility, or a modern office space. Explore the future of construction with our innovative PEB solutions.



Design Department & Team Deepjyot

Yes, Deepjyot Engineers Pvt. Ltd. has its own Design Department which comprises of highly experienced Steel Structural Engineers. The Design Department plays a crucial role in the Performance and Client Satisfaction for PEB projects executed by us. The department is well equipped with the latest software tools, such as **STAADPro**, **AutoCAD** etc. They work closely with the manufacturing and erection teams to ensure that every project is completed to the highest standards.



Why Pre-Engineered Buildings are better than Conventional Steel Buildings?

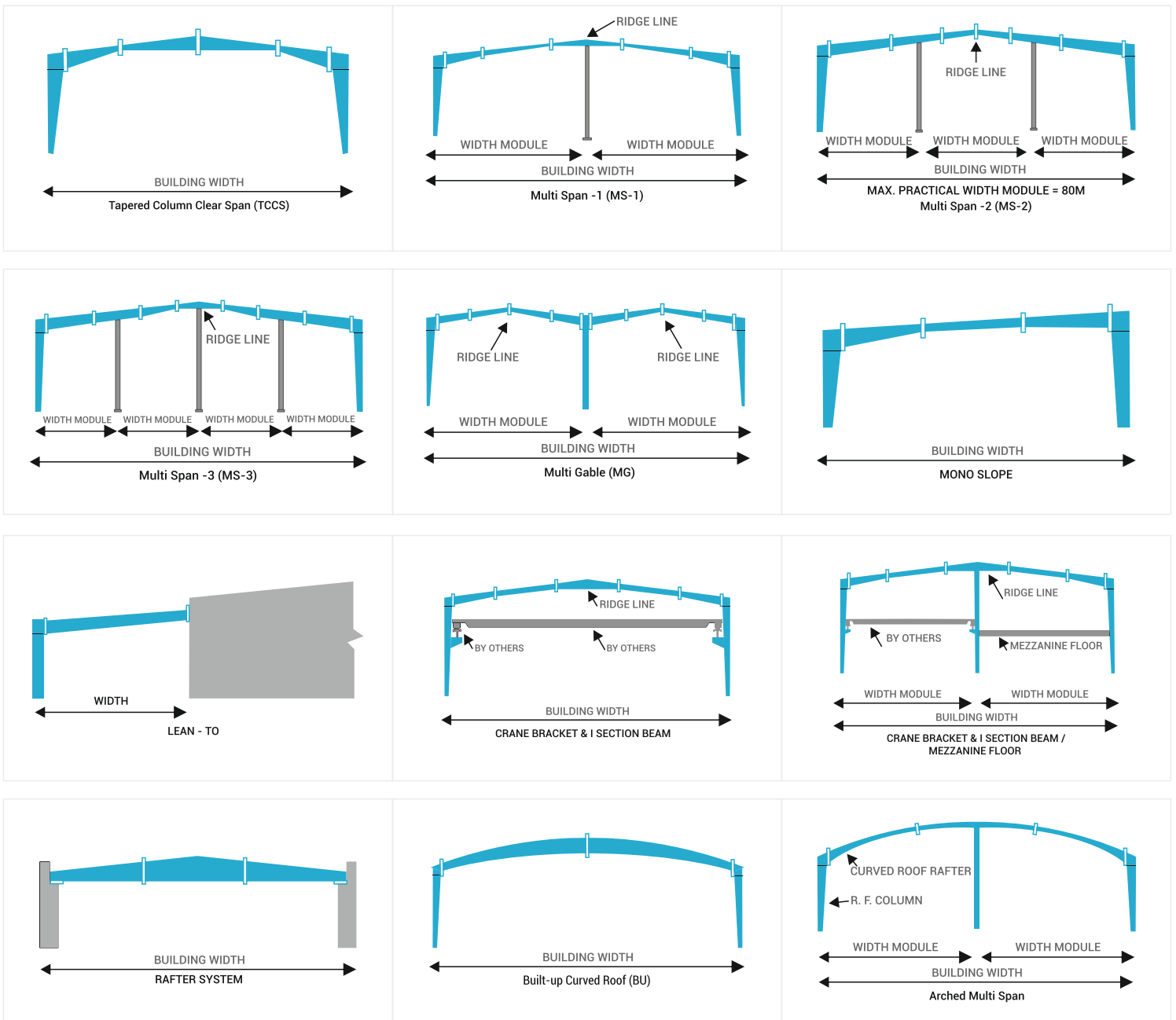
Building Parameters	PEB	Conventional
Steel Weight (without Sheeting)	20% to 30% Lighter	Heavier
Column / Rafter	Primary Members are Tapered	Primary Members are hot rolled 'I' Sections
Design	Software based Standard designs that are replicable	Partially Automated Designs with manual intervention on site by fabricator & labours.
Secondary Members	Secondary Members are light weight & rolled framed 'Z' & 'C' sections formed at factory	Heavier weight of Secondary Members which are 'I' & 'C' sections locally procured
Delivery Timeline	Faster	Time Consuming due to onsite fabrication
Foundation	Easy to build simple design, lesser foundations	Substantial investment in foundation work
Erection Process	Easy, Fast & Safe	Labour Intensive with many hidden costs
Seismic Resistance	Low Weight Flexible Frames offer Higher Resistance to seismic forces	Relatively higher weight to achieve higher resistance to seismic forces
Flexibility	Future expansion is simple, easy and cost effective. Single supplier can coordinate changes.	Revisions or additions can be difficult due to extensive redesign.
Performance	All components are and designed to act together as a system, resulting in maximum efficiency, precise fit and performance.	Components that are available in market are used in general with many alternative configurations.
Accountability	Single source responsibility	Multiple vendors involved
Overall Cost	Cost is justified from a time advantage perspective and when considered total project costs	Cost could be bit lower than PEB Structures but is difficult to accurately define the total costs
Applications	Best suited for Industrial Infrastructure and Warehousing, Airport Hanger, Large Stadium projects etc.	Preferred for very specific requirement which has to be fabricated onsite only

Design Parameters

Key considerations in the design of Steel Buildings include ensuring Structural Integrity, optimizing functionality and space utilization, selecting appropriate materials, prioritizing energy efficiency, sustainability and ensuring compliance with relevant codes and standards.

Types of Buildings

Below mentioned sketches are possible framing system applicable to any type of application.



Columns & Rafters

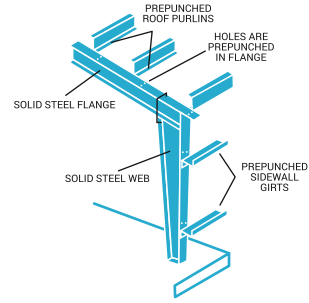
Columns & Rafters Rafters are structural components providing support and stability to the building. Depending on design parameters, these columns / rafters could be straight or tapered.



Typical Rafter



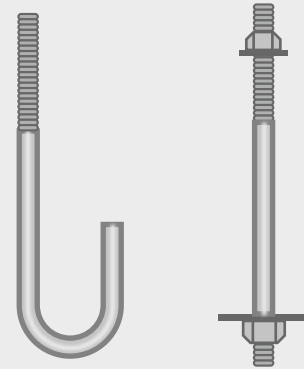
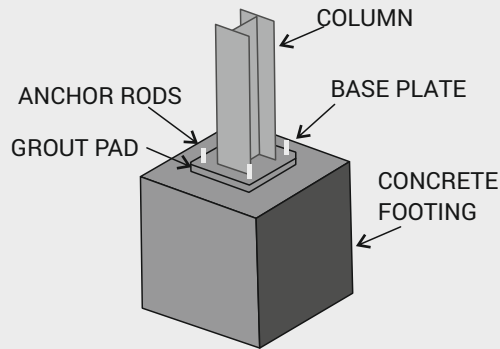
Typical Columns



Assembling

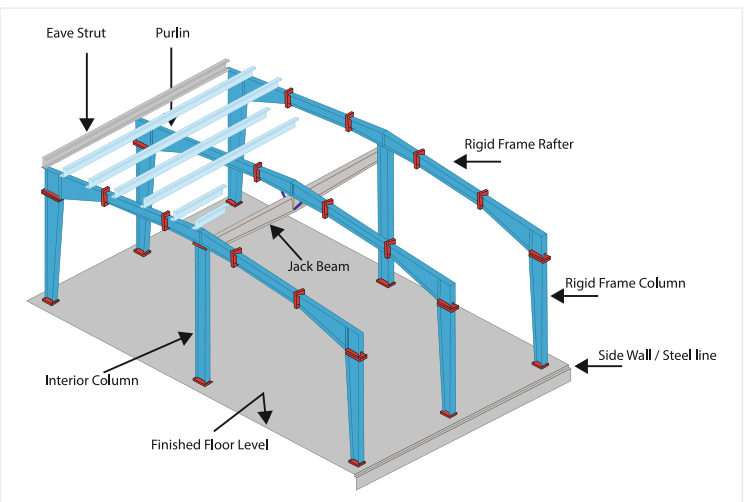
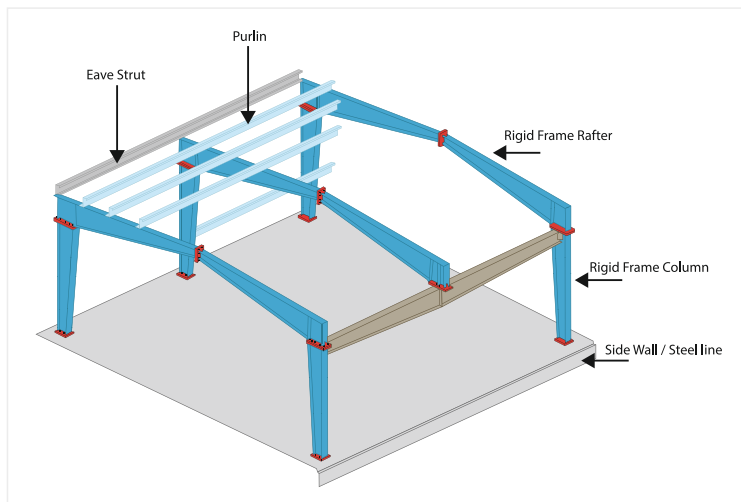
Anchor Bolts

Anchor Bolts are essential fasteners used to secure the steel columns to the foundation.



Jack Beams

A jack beam is a horizontal beam that supports the loads when column between two bays is omitted.



Bracings

It provide lateral stability and resist horizontal forces, such as wind or seismic loads. Wherever diagonal bracings cannot be used, Portal Bracings are designed and erected.



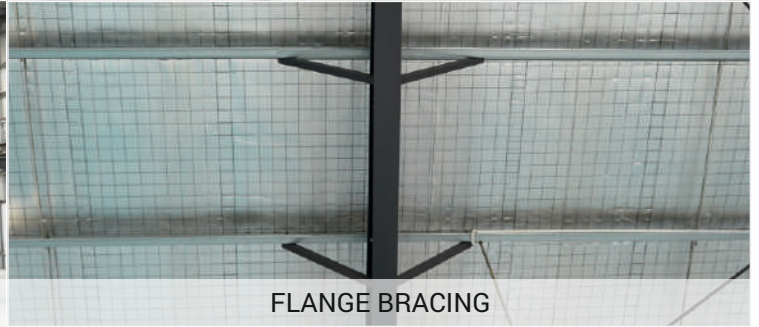
PIPE BRACING



ROD BRACING



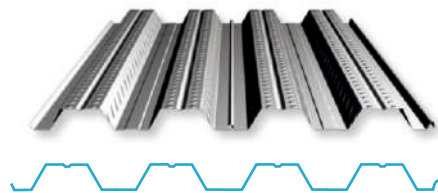
PORTAL BRACING



FLANGE BRACING

Mezzanine System

Mezzanine System is used and designed to maximize vertical space utilization using Deck Panels, Mezzanine Beams, Joist Beams, Staircase, Checkered Plate, Hand Rails etc.



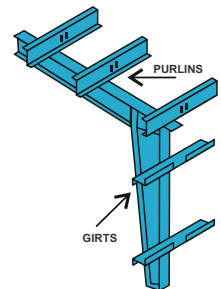
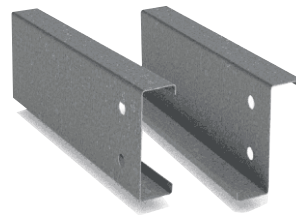
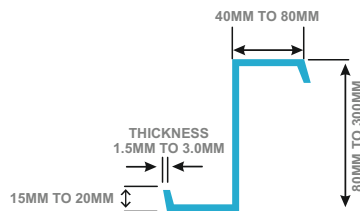
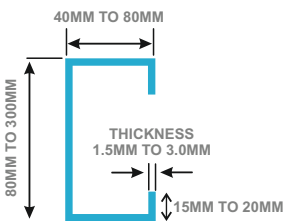
Crane Solution

This particular Solution requires precise engineering to accommodate the specific load requirements, span lengths, and building heights, ensuring safe and reliable crane operations within the PEB structure. We consider important factors like crane capacity, runway beam design, support structures and proper alignment with the building's structural elements.



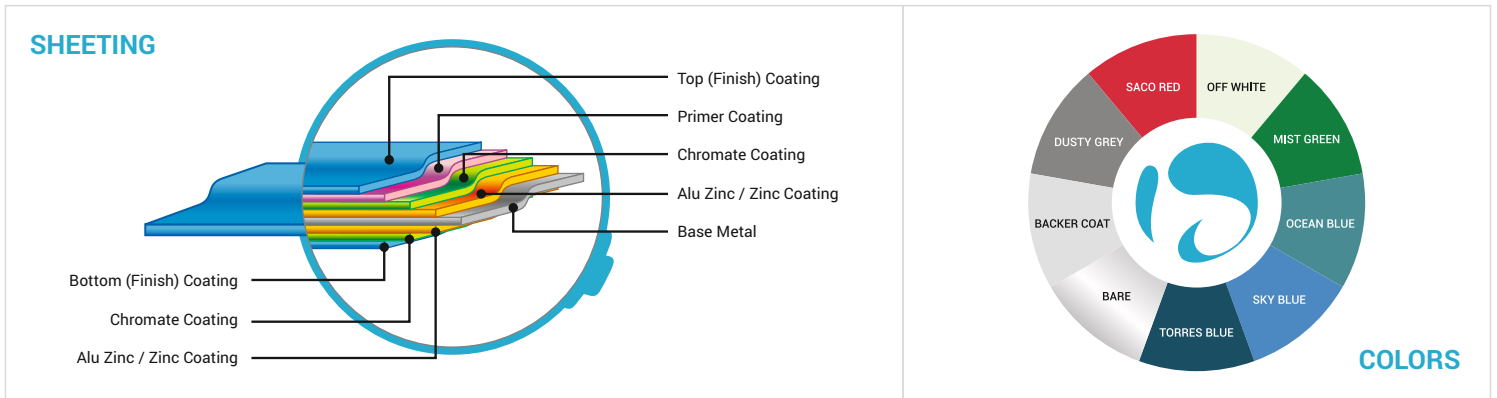
Purlins, Girts & Struts

They are essential for providing support to the roof and wall panels, enhancing the structural stability and overall integrity of the building. They are usually made of two types of materials: galvanized iron (GI) and mild steel (MS).



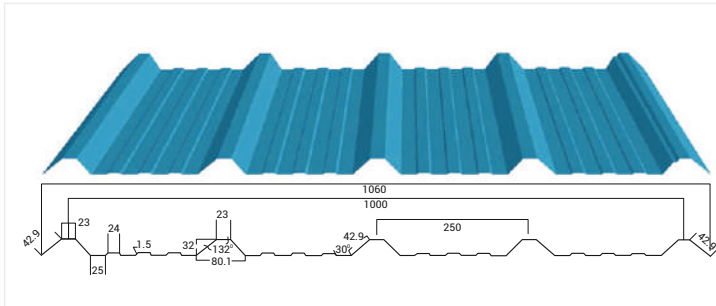
Roof & Wall Panels

Roof & Wall Panels system utilizes metal panels made of Galvalume, a combination of steel coated with a layer of aluminum and zinc. Apart from regular Screw Down Sheeting, available options are Double Skin Roofing / Cladding, Standing Seam Roofing, Sandwiched Puff Panel. Also, Sheeting Accessories, Gutters & Down Spouts and Miscellaneous items are integral part of PEBs.



Screw Down Roofing

Standard Roofing / Cladding system utilizes metal panels made of Galvalume, a combination of steel coated with a layer of aluminum and zinc.



Double Skin Roofing / Cladding

This system consists of two layers of roof or wall panels. It is used particularly when plain look without any small pocket is required to avoid dust, birds etc. Double Purlins / Girts are installed to fix Roofing and Cladding.



Standing Seam Roofing

Standing Seam Roofing is used for larger widths because it allows significant reduction in the roof slope ratio. This reduction leads to savings in the consumption of structural steel.



Sandwiched Puff Panel

Both Side Metal Sheet with Puff inside is used for roofing and cladding. It is widely used for excellent thermal insulation, noise reduction properties and structural strength. Fire retardant sandwich puff panels are also available.



Day Light Solution

Light Sheets are provided using Poly Carbonate Sheets / Strips



Sheeting Accessories, Gutters etc...



Ventilation Solutions

Roof Monitor, Ridge Ventilators and Turbo Ventilators, Louvers are used to enhance natural ventilation with lighting.



Openings & Canopies

Projected Structure above openings is installed in a bay (Column to Column) with soffit are essential in building design and functionality.



Fascia

Fascia in pre-engineered steel buildings (PEBs) is a horizontal architectural feature located at the outer edge of the roof, providing a finished appearance.



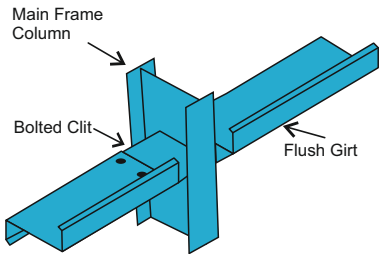
Cage Ladder

Cage ladders are vertical access structures commonly installed in pre-fabricated buildings, providing safe and secure means for vertical movement and maintenance tasks.



Bird Nest Preventing Flushed Purlins

Flushed purlins, also known as bird-proof purlins, are a design feature used on PEB roofs (flushed with bottom surface of roof panels) to prevent birds from sitting on Rafters of the building.



Insulation

Available Insulation Solutions are - Air Bubble Insulation, XLPE Insulation, Glass Wool / Rock Wool Insulation are suggested by our experts depending on Building usage application.



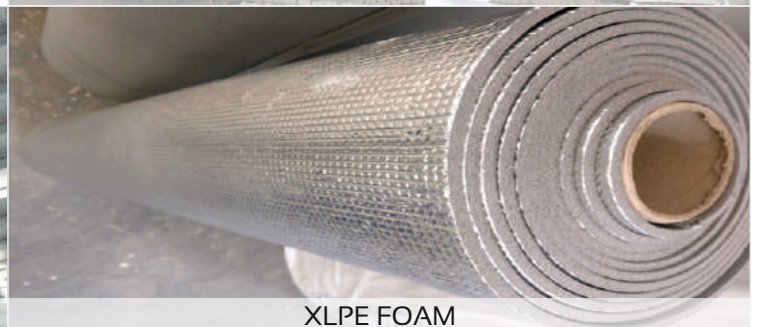
AIR BUBBLE



AIR BUBBLE



XLPE FOAM



XLPE FOAM



GLASS WOOL / ROCK WOOL



GLASS WOOL / ROCK WOOL

Few Of Our Dream Projects



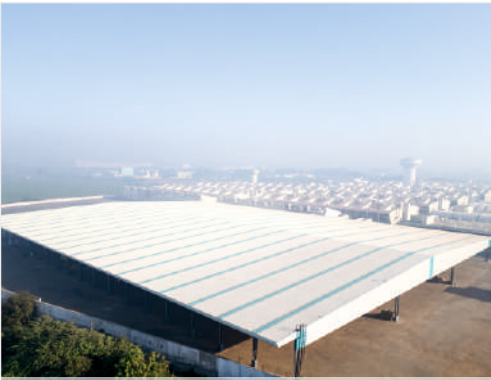
A J SMART BUILD PVT. LTD. - RAJKOT



ACTIONWARE INDIA PVT. LTD. - WANKANER, RAJKOT



ACTIVE CARGO & ALIED SERVICE PVT. LTD. - KUTCH



APMC - RAJKOT



AUSTIN FOODS & BEVERAGES P. LTD VADODARA



BALAJI WAFERS PVT. LTD. - MULTIPLE CITIES



BATHERO SANITARY LLP - MORBI



CAMERICH PAPERS PVT LTD - WANKANER, RAJKOT



CREDENCE SOLAR PANELS PVT. LTD. - RAJKOT



ESTEEM AUTO PVT. LTD. - RAJKOT



FALCON PIPES PVT LTD - RAJKOT



FIOTEX COTSPIN PVT. LTD. - JAMNAGAR

Few Of Our Dream Projects



GAUTAM ENGICAST PVT LTD - RAJKOT



GREENMAN PANELS LLP - RAJKOT



GUJARAT MOTORS - RAJKOT



HEALTHY HARVEST FOODS - GANDHIDHAM, KUTCH



JAGDAMBA CERATECH (LA TAJ) - THAN, RAJKOT



KATARIYA AUTOMOBILES - RAJKOT



KATSAON LOGISPACE - RAJKOT



MARVELLITE AEROMATIC PVT. LTD.
GANDHIDHAM, KUTCH



METRO METALIKS LTD. - RAJKOT



NOVANEXT ENERGIES PVT LTD JAMNAGAR



OM MARBLE - RAJKOT



PARIN FURNITURE LTD. - RAJKOT

Few Of Our Dream Projects



PELICAN ROTOFLEX PVT. LTD. - RAJKOT



SAFAR ECO PET PVT. LTD. - RAJKOT



SAKSHI BUILDCON (AUDITORIUM) VADODARA



SAFAR POLY FURNITURE LLP - RAJKOT



BHOOMI HOTELS PVT. LTD. (SEASON'S HOTEL) - RAJKOT



SHILP CERAMIC PVT. LTD. - RAJKOT



SUN FORGE PVT. LTD. - RAJKOT



SUNSTAR METALS PVT. LTD. & SHIVANAND TECHNOCAST - RAJKOT



VARUN GROUP - RAJKOT



VARUN GROUP - RAJKOT



VISION NON WOVENS PVT. LTD. - RAJKOT



BLUE SQUARE CERAMIC - THAN, RAJKOT

Few Of Our Dream Projects



BRAJESHWORI INDUSTRIES - NEPAL



CROWN LAMINATES PVT.LTD. - AHMEDABAD



DEEPJYOT ENGINEERS PVT LTD - RAJKOT



HILTON VALVES PVT. LTD. - RAJKOT



WINGS AGRICULTURE PVT. LTD. - RAJKOT



NEPTUNE LAMINATES PVT. LTD. - RAJKOT



JAYESH PULSE - RAJKOT



MACRISE INDUSTRIES - MORBI



ONERY TILES LLP - MORBI



RAJKOT POLYFAB LLP - RAJKOT



SAFAR POLY FIBRE PVT. LTD. - RAJKOT



SYON CERA - THAN, RAJKOT

Few Of Our Esteemed Clients





Factory :

Survey No. 188, At-Padavala,
Tal. Kotda Sangani,
Dist. Rajkot (Gujarat).

Office :

B/h Akshar Appartment, Somnath Society-1, Near Ford
Jay Ganesh Showroom, 150 Feet Ring Road,
Rajkot-360 005 (Gujarat)

 +91 90990 25207

 sales1@deepjyot.net

www.deepjyot.net